

IGEA

LAB

2019 2020
FALL WINTER



Igeayarn

**Igea Yarn**

last seen today at 13:25



CLASSICO ONLINE

13:18

Linea di filati classico-moderna
che varia da lane irrestingibili a lane cotte.
Studiate per tutte le tipologie
di macchine da maglieria,
tutto questo sviluppato
in una vastissima cartella colori
tutta in stock service.

13:18

CLASSICO ONLINE

13:20 ✓✓

A classic-modern line,
shrinkproof and boiled wool suitable
for any knitting machine,
developped through a wide stock-service
supported colour-range.

13:20 ✓✓



Type a message





2/30 - 2/36 - 2/48 - 2/60 Nm
100% Lana - Merino Extra Fine

2/30 - 2/48 - 2/60 Nm
100% Lana - Merino Extra Fine

AQUILA

AQUILA
B O I L E D

Stock Service



Stock Service



ADELAIDE

FENICE

2/30 - 2/44 Nm
52% Lana - Merino Fine
48% Viscosa

2/60 Nm
100% Lana - Merino Superfine
120' S



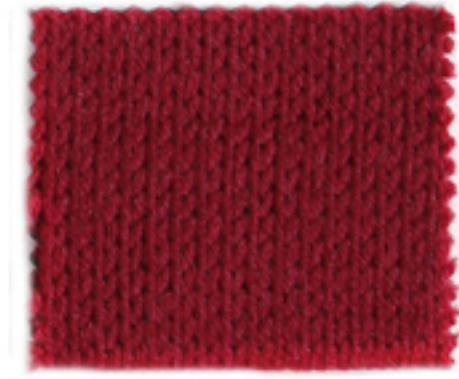
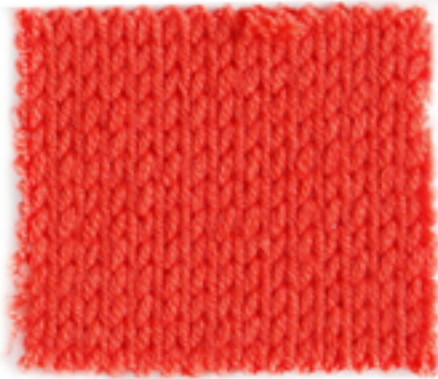


1.8 Nm
100% Lana - Merino Extra Fine

3 - 4.7 Nm
100% Lana - Merino Extra Fine

A Q U I L A

A Q U I L A



G I L I A N

C O R O N A

2/28 Nm
80% Lana - Merino Extra Fine
20% Seta

3/16 - 4/16 Nm
100% Lana

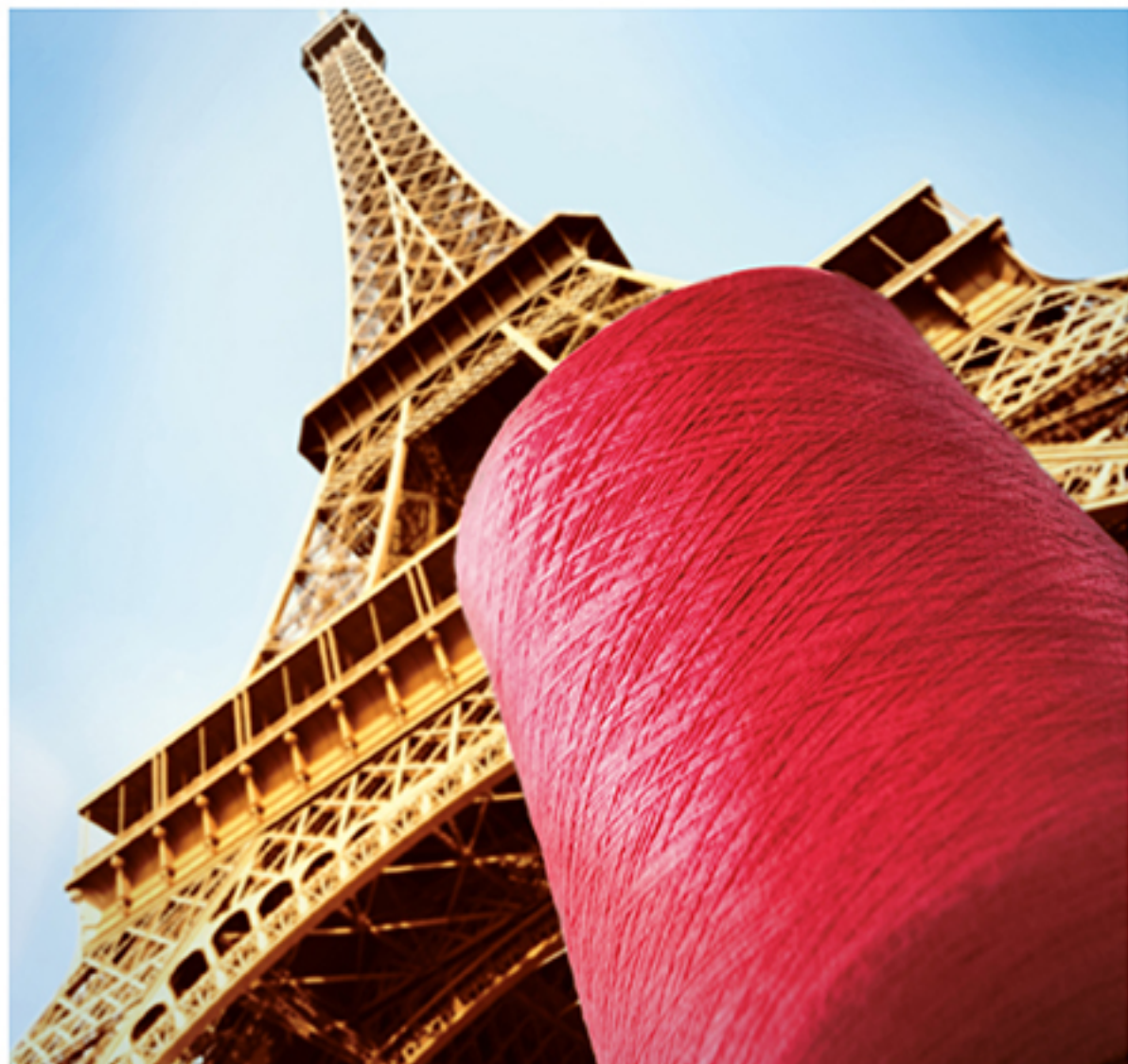




Igeayarn



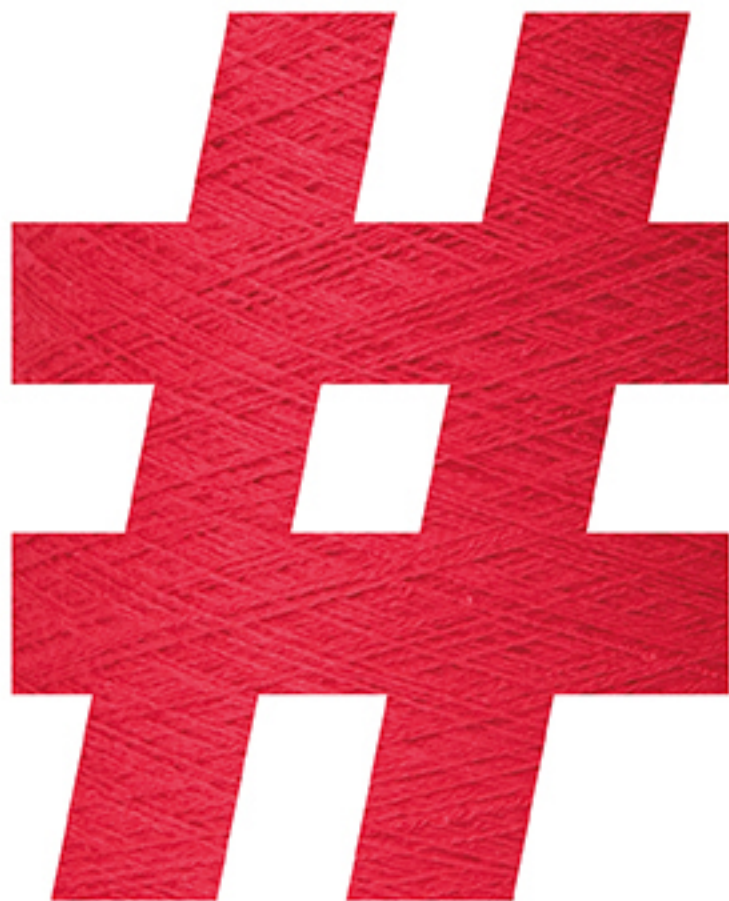
rocca_in tour
Tour Eiffel, Paris, France



Piace a 4.110 persone

#igea #igeayarn #igeafilati #yarn #thread #fashion #fashionweek #italy #madeinitaly #fashiondesign

tattili tridimensionali



tridimensional tactile



2/60 Nm
72% Modal Microfibra
28% Poliammide

FINISSIMO



24 Nm
68% Viscosa
32% Poliestere

CARLA



Stock Service



SEMPLICE

15 Nm
91% Viscosa
9% Poliestere
22 Nm
83% Viscosa
17% Poliestere



CHAMONIX

20 Nm
65% Viscosa
18% Poliammide
17% Angora



MACHINE
WASHABLE



2/60Nm
100% Polipropilene

14.5 Nm
53% Lana - Merino Fine
25% Poliammide
22% Viscosa

FUTURA

COMMA

Fast Delivery



ASBY

6.3 Nm
55% Lana - Merino
40% Acrilico
5% Poliestere





Igeayarn



amour_rocca

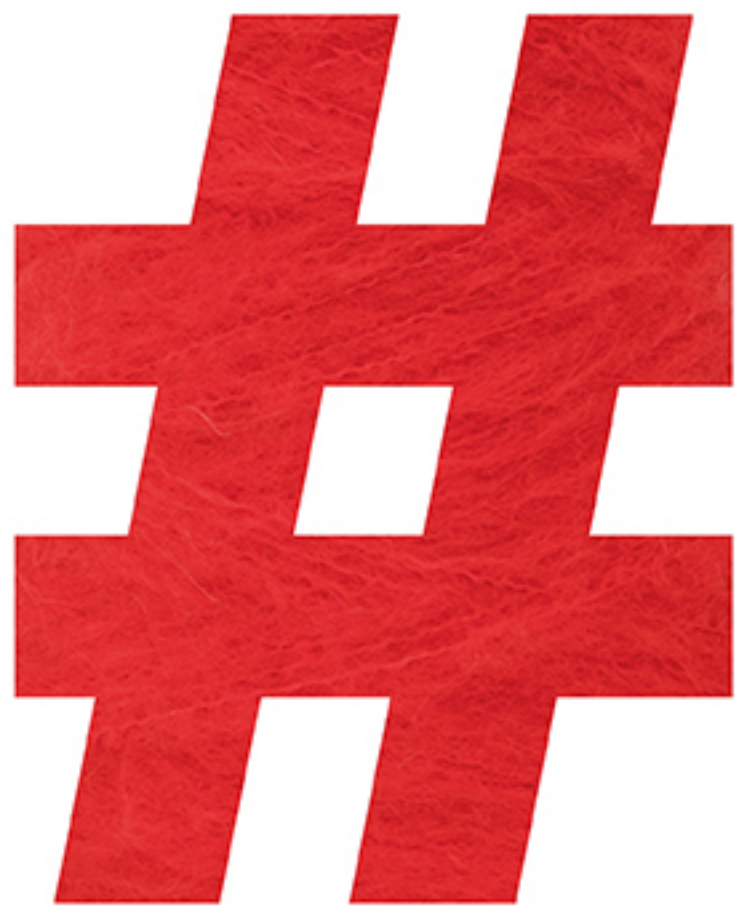
Pink Beach, Barbuda Island, Caribbean Sea



Piace a 2.720 persone

#igea #igeayarn #igeafilati #yarn #thread #fashion #fashionweek #italy #madeinitaly #fashiondesign

creatività oltreconfine



creativity no borders



9.5 Nm

38% Acrilico / 32% Poliammide / 30% Mohair - Kid

14.5 Nm

37% Acrilico / 35% Poliammide / 28% Mohair - Kid

ANTARES

Stock Service



VISONE

5 Nm

32% Lana

30% Acrilico

20% Mohair

16% Poliammide

2% Elastan



VISONE

10 Nm

28% Lana

28% Acrilico

23% Poliammide

18% Mohair

3% Elastan





13.5 Nm
 45% Acrilico
 32% Poliammide
 20% Mohair
 3% Elastan



3.5 Nm
 50% Mohair - Kid
 37% Acrilico
 11% Poliammide
 2% Elastan

SHANNON

L I V E

Stock Service



MORZINE

2.2 Nm
 40% Lana - Merino
 40% Acrilico
 8% Mohair Kid
 8% Poliammide
 4% Poliestere





Igeayarn



rocca_forte
Florence, Tuscany, Italy



Piace a 3.020 persone

#igea #igeayarn #igeafilati #yarn #thread #fashion #fashionweek #italy #madeinitaly #fashiondesign

scenari condivisi



sharing scenery



9.5 Nm
 40% Acrilico
 30% Alpaca - Superfine
 30% Poliammide

BOLIVIA



10 Nm
 50% Poliammide
 25% Mohair - Kid
 25% Alpaca - Superfine

WOOLLY



SIRA

7.3 Nm
 60% Lana / 40% Poliammide

14 Nm
 55% Lana / 45% Poliammide



SIRA STRETCH

10 Nm
 53% Lana
 44% Poliammide
 3% Elastan





13.5 Nm
 47% Poliammide
 30% Lana
 20% Alpaca - Superfine
 3% Elastan

NOAH



4.2 Nm
 40% Lana
 30% Alpaca - Superfine
 28% Poliammide
 2% Elastan

ILLIMANI



PUKARA

3.5 Nm
 40% Poliammide
 30% Alpaca - Superfine
 30% Mohair



VERBIER

3 Nm
 45% Poliammide
 25% Alpaca - Superfine
 25% Lana
 5% Poliestere

air-flow
 system





Igeayarn



la_rocca
Waterton Park, Canada



Piace a 1.580 persone

#igea #igeayarn #igeafilati #yarn #thread #fashion #fashionweek #italy #madeinitaly #fashiondesign

panorama emozionale



emotional view



7.3 Nm

60% Lana / 40% Poliammide

14 Nm

55% Lana / 45% Poliammide

V E L A

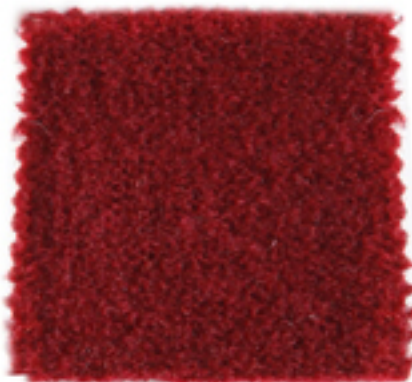
Stock Service



10 Nm

53% Lana
44% Poliammide
3% Elastan

V E L A
S T R E T C H



R E S I A

2.7 Nm

49% Poliammide
25% Alpaca - Superfine
25% Lana
1% Elastan





2.7 Nm
47% Lana
30% Cotone
23% Poliammide

GARDENA



B I T

4.2 Nm
30% Acrilico
26% Poliammide
25% Lana
17% Mohair - Kid
2% Elastan





Igeayarn



bella_rocca
Mount Pandim, Sikkim, India



Piace a 2.203 persone

#igea #igeayarn #igeafilati #yarn #thread #fashion #fashionweek #italy #madeinitaly #fashiondesign

volumi enfatizzati



accented volumes



* NATURAL ORIGIN
ECO-SUSTAINABLE
RECYCLABLE PROCESS (>98%)



3 Nm

78% **Acetato***
12% Poliestere
10% Poliammide

8 Nm

76% Viscosa
24% Poliammide

L E D



P O N Y



P A R T Y

1.5 Nm
80% Poliammide
20% Lana





1.1 Nm
38% Acrilico
32% Poliammide
30% Lana

A R O S A



FRIANTE

1.4 Nm
93% Viscosa
7% Poliammide



FRIANTE
STAMPATO

1.4 Nm
93% Viscosa
7% Poliammide



2019 2020
FALL WINTER



Manifattura IGEA S.p.A. - Via Pollative 119/L - 59100 PRATO - tel. 0574 5181 fax 0574 621749
www.igeayarn.it - igea@igeayarn.it

MEMBER OF



CONSORZIO
PROMOZIONE
FILATI