

FALL

WINTER

2021

2022

FALL  
WINTER  
2021 2022





Presenze Sottili

Subtle Presences

# TENWOOL



COLOR CARD

2/30 Nm  
50% Lana - Merino Extra Fine  
50% Tencel



Made with  
100% RWS certified wool  
Certified to RWS by RWS  
0902 2018-0100

# TENWOOL 1.8



COLOR CARD

1.8 Nm  
50% Lana - Merino Extra Fine  
50% Tencel



Made with  
100% RWS certified wool  
Certified to RWS by RWS  
0902 2018-0100

# KINABALU



*air-flow*  
kinabalu



COLOR CARD

4.5 Nm  
42% Lana - Merino Extra Fine  
42% Tencel  
16% Poliammide



Made with  
42% RWS certified wool  
Certified to RWS by RWS  
0902 2018-0100

# MOORLAND



13,5 Nm  
33% Tencel  
33% Lana - Merino Extra Fine  
31% Poliammide  
3% Elastan

# ESSENZA



25 Nm  
50% Poliammide  
35% Mohair - Superkid  
15% Lana - Merino Extra Fine



Made with  
100% 100% certified wool  
Certified to RWS by RWS  
since 2016-01-01

# ASTRO 23



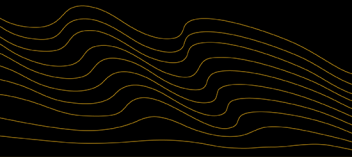
23 Nm  
44% Poliammide  
40% Mohair - Superkid  
16% Lana - Merino Extra Fine

# CASIMIRO



23 Nm  
35% Alpaca - Baby  
35% Poliammide  
15% Cashmere  
13% Lana - Merino Super  
120S  
2% Elastan





Volume da atmosfera

Feel the Volume

# ASTRO 50



30 Nm  
50% Mohair - Superkid  
30% Poliammide  
18% Lana - Merino Extra Fine  
15 Nm  
50% Mohair - Superkid  
47% Poliammide  
3% Lana - Merino Extra Fine

*Stock Service*

# ASTRO



10 Nm  
65% Mohair - Superkid  
32% Poliammide  
3% Lana - Merino Extra Fine  
15 Nm  
60% Mohair - Superkid  
35% Poliammide  
5% Lana - Merino Extra Fine

*Stock Service*

# MOONLIGHT



5.5 Nm  
82% Mohair - Kid  
16% Poliammide  
2% Elastan

# BATUFFOLO



2.3 Nm  
70% Mohair - Kid  
15% Lana  
15% Poliammide



# KIMBERLEY

# EFFETTO



12 Nm  
35% Mohair - Superkid  
35% Lana - Merino Fine  
27% Poliammide  
3% Elastan



20 Nm  
41% Mohair - Superkid  
34% Poliammide  
20% Lana - Merino Extra Fine  
5% Elastan

# CERVINO



3 Nm  
35% Mohair - Superkid  
35% Alpaca - Baby  
25% Lana - Merino Extra Fine  
5% Poliestere



Soffusi per ruolo

Dimmer by Feature

# PERUVIAN



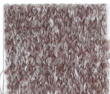
5.5 Nm  
42% Alpaca - Baby  
40% Lana - Merino Extra Fine  
16% Poliammide  
2% Elastan

# MIRAGE



5.5 Nm  
41% Alpaca - Superfine  
41% Mohair - Kid  
16% Poliammide  
2% Elastan

# ALTEZZA



4 Nm  
50% Alpaca - Baby  
36% Cotone  
13% Poliammide  
1% Elastan

# ANTERO



7.8 Nm  
52% Cotone  
30% Alpaca - Baby  
26% Poliammide  
10% Lana - Merino Fine  
2% Elastan

# PELUCHE



COLOR CARD

2.8 Nm  
36% Cotone  
23% Alpaca - Superfine  
23% Mohair - Kid  
17% Poliammide  
1% Elastan

# FLORENCE

*air-flow*  
technology



COLOR CARD

2.8 Nm  
30% Cotone  
26% Lana - Merino Extra Fine  
25% Alpaca - Baby  
19% Poliammide

# MIRAFLO



COLOR CARD

10 Nm  
34% Mohair - Kid  
34% Alpaca - Baby  
32% Poliammide

# HANAQ



COLOR CARD

13.5 Nm  
50% Alpaca - Baby  
26% Lana - Merino Fine  
21% Poliammide  
3% Elastan





Caratteri avvolgenti  
Embracing Nature

# WOOLOVE



3/10 Nm  
98% Lana - Merino Extra Fine  
2% Poliammide



# LYSKAMM

*air-flow*  
lyskamm



3 Nm  
80% Lana - Merino Extra Fine  
20% Poliammide



# HUSKY

*air-flow*  
husky



1.8 Nm  
95% Lana - Merino Extra Fine  
5% Poliammide

3 Nm  
90% Lana - Merino Extra Fine  
10% Poliammide





# WALKER

*air-flow*  
system



2.6 Nm

65% Lana - Merino Extra Fine  
35% Poliammide



COLOR CARD

# CANAZEI

*air-flow*  
system



2.5 Nm

84% Lana - Merino Extra Fine  
16% Poliammide



COLOR CARD

# PLAID

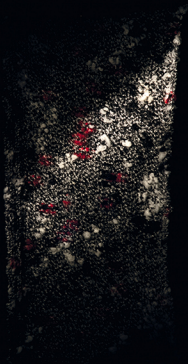


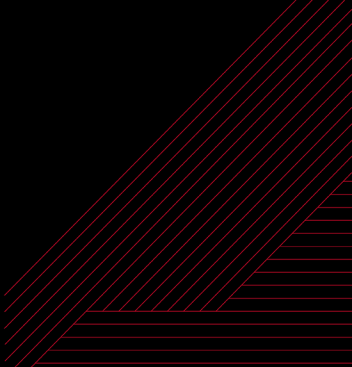
7.3 Nm

56% Lana - Merino Extra Fine  
24% Poliammide  
20% Cotone



COLOR CARD

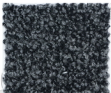




Protagonisti esagerati

Larger than Life

# ABETONE

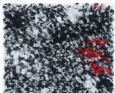


COLOR CARD

2.7 Nm

85% Lana - Merino Extra Fine  
14% Poliammide

# SESTRIERE



COLOR CARD

2.7 Nm

85% Lana - Merino Extra Fine  
14% Poliammide

# FUNES



RECYCLED



RECYCLED

2.4 Nm

41% Cotone  
26% Poliammide  
25% Lana - Merino Extra Fine  
8% Mohair - Kid



COLOR CARD

# CASTORE



2.3 Nm

81% Lana - Merino Extra Fine  
12% Mohair - Kid  
7% Poliammide



COLOR CARD

# ORTLES

*air-flow*  
technology



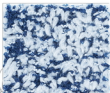
2.7 Nm

88% Lana - Merino  
12% Poliammide



COLOR CARD

# FOLGARIA



2.4 Nm

43% Lana - Merino Extra Fine  
35% Cotone  
22% Poliammide



COLOR CARD

# TALGAR



3.2 Nm

57% Lana - Merino Extra Fine  
27% Cotone  
16% Poliammide

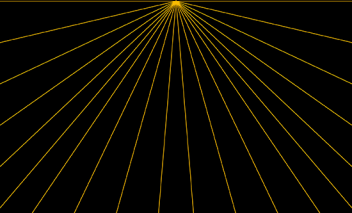


COLOR CARD



Lirici preziosi

Precious Lyric



# STRASS



11 Nm  
74% **Acetato\*** - 18% Viscosa  
8% Fibra Metallizzata  
12.5 Nm  
88% **Acetato\*** - 6% Poliammide  
6% Fibra Metallizzata  
23 Nm  
80% **Acetato\*** - 10%  
Poliammide  
10% Fibra Metallizzata

*Stock Service*

# STRASS 37



37 Nm  
65% **Acetato\***  
18% Fibra Metallizzata  
17% Poliammide

# SPARKLING



*air-flow*  
system



4 Nm  
34% Fibra Metallizzata  
28% Poliammide  
28% Mohair - Superkid  
10% Lana - Merino Extra Fine







# STARRY IG

*air-flow*  
insulation



COLOR CARD

5.4 Nm

67% Viscosa

33% Lana - Merino Extra Fine

# BOREALE



COLOR CARD

4.3 Nm

53% Poliammide

26% Mohair - Superkid

19% Fibra Metallizzata

2% Lana - Merino Extra Fine

# GLIMMER



COLOR CARD

12 Nm

42% Poliammide

27% Lana

18% Alpaca - Superfine

10% Fibra Metallizzata

3% Elastan

# SHOW



COLOR CARD



9 Nm

47% Mohair - Superkid

30% Poliammide

16% Lana - Merino Extra Fine

7% Fibra Metallizzata



ICEA



Manufactura ICEA S.p.A. - Via Poliviva 119/L - 56100 PRATO - tel. 0574 5181 fax 0574 621749  
[www.icea.gov.it](http://www.icea.gov.it) - [icea@icea.gov.it](mailto:icea@icea.gov.it)



MEMBER OF



CONSORZIO  
NACIONALE  
ICEA