

# SPRING SUMMER 2023

IGEA  
STUDIO

**SPRITZ**

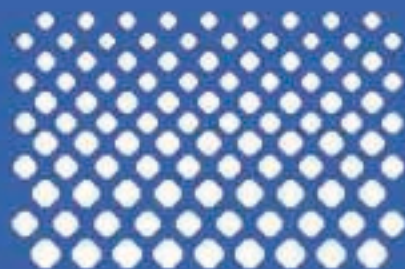
INGREDIENTI:  
9 cl di prosecco;  
6 cl di Aperol;  
q. b. di soda/seltz.

MARBELLA



*air-flow*  
system

10 Nm  
67% Cotone  
33% Poliammide



**PRELUDIO DI STAGIONE**  
PRELUDE OF A SEASON



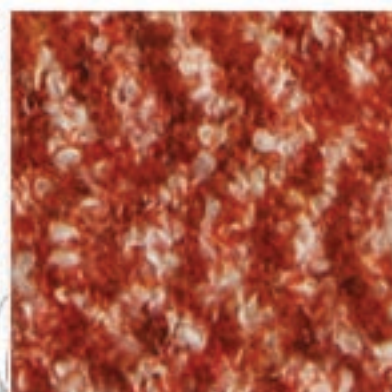
# JEREZ



3.6 Nm  
100% Cotone



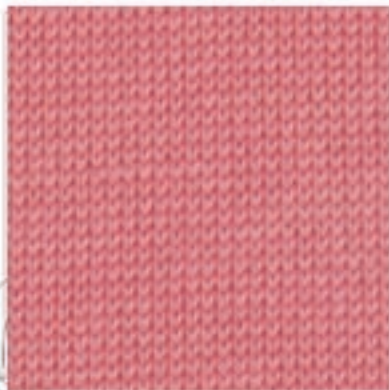
# MADEIRA



4.8 Nm  
44% Lana Merino Extra Fine  
42% Cotone  
12% Poliammide  
2% Elastan



# BALOS BALOS RWS



9.3 Nm  
100% Lana Merino Extra Fine



Certified to RWS by ICEA  
(RWS 2819-610)

# VALENCIA



24 Nm  
58% Lana - Merino Superfine  
120'S  
42% Poliammide



*Pear Collins*

INGREDIENTI:

- 50ml gin,
- 60ml puree di pera,
- Soda, Lime.



ARES  
CREPE



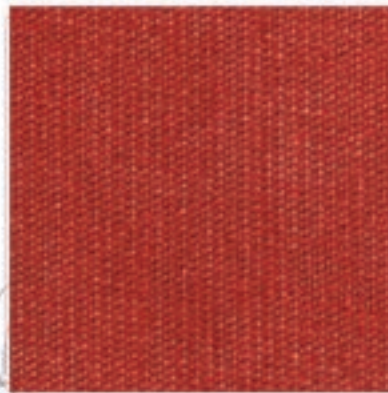
30 Nm  
100% Viscosa



TRASLUCIDI A CONFRONTO  
FACING TRANSPARENCIES



# ANTALYA



28 Nm  
72% Viscosa  
28% Poliestere

# FOGLIA



24 Nm  
58% Viscosa  
42% Cotone

# PETALO



17 Nm  
51% Cotone  
49% Viscosa



# CASSIS



33 Nm  
62% Viscosa  
38% Poliammide

# SHANTY



50 Nm  
88% Viscosa  
12% Poliammide

# NIZZA



27 Nm  
93% Viscosa  
7% Poliammide

*Tropical*

INGREDIENTI:

1/10 di granatina; 1/10 di succo di lime;

4/10 di succo di ananas;

4/10 di rum; frutta tropicale per guarnire.



**MEMORIE DI FORMA**  
MEMORIES OF A SHAPE



# ATHENA

WASHABLE



MACHINE  
WASHABLE



SCAN QR CODE



COLOR CARD

17 Nm

96% Viscosa

4% Poliestere

# FORMENTERA



43 Nm

88% Viscosa

12% Poliammide

SCAN QR CODE



COLOR CARD

# MAIORCA



SCAN QR CODE



COLOR CARD

20 Nm  
70% Viscosa  
30% Tactel Poliammide

# ATHENA CREPE



SCAN QR CODE



COLOR CARD

30 Nm  
100% Viscosa

# MAT



SCAN QR CODE



COLOR CARD

50 Nm  
88% Viscosa  
12% Poliammide

MOSCOW MULE

INGREDIENTI:

- 4,5 cl vodka;
- 12 cl ginger beer;
- 1 cl succo di lime fresco.

# BIOLAST BIOLAST GOTS



Made with 50% organic linen

Made with 35% organic cotton



Certified by GCS (NORS 2018-112)

18 Nm

50% Lino / 36% Cotone  
14% Poliammide

18 Nm

50% Lino Biolog.  
36% Cotone Biolog.  
14% Poliammida Riciclato



NATURALMENTE FLESSIBILI  
NATURALLY FLEXIBLE



# RODAS RODAS GOTS



25 Nm  
70% Canapa  
30% Cotone

25 Nm  
70% Canapa Biologica



Organic  
Certified by ICEA (0015 2818-113)

## KABIRA



2.6 Nm  
78% Lino  
22% Poliammide

## OPIUM



21 Nm  
60% Lino  
35% Viscosa  
5% Poliammide



# HAWAII HAWAII GOTS



6.2 Nm  
70% Lino  
30% Cotone

6.2 Nm  
70% Lino Biologico  
30% Cotone Biologico



Organic  
Certified by ICEA (GOTS 2018-113)

# SAHARA SAHARA GOTS



25 Nm  
70% Lino / 30% Cotone  
34 Nm  
67% Lino / 33% Cotone  
25 Nm  
70% Lino Biologico  
30% Cotone Biologico



Organic  
Certified by ICEA (GOTS 2018-113)

**Caipiroska**

**INGREDIENTI:**

50 ml Vodka; 50 g Fragole;

30 g Lime;

20 g Zucchero di canna.



**COFFEE**



SCAN QR CODE



COLOR CARD

2 Nm

76% Cotone

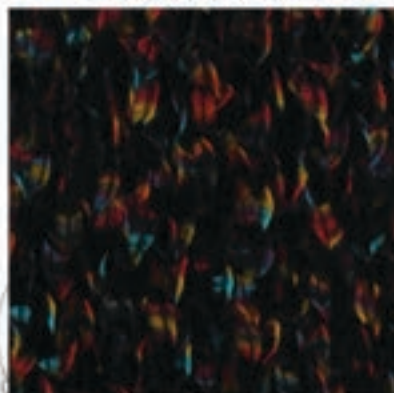
24% Poliammide



**CIRCUITO CREATIVO**  
CREATIVE NETWORK

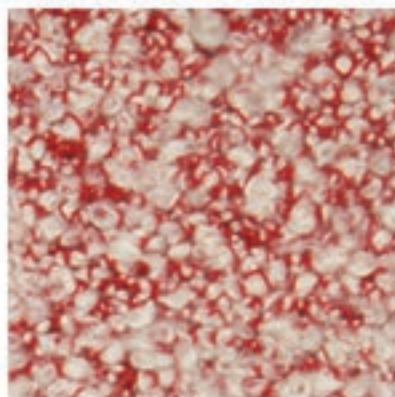


# COFFEE STAMPATO



2 Nm  
76% Cotone  
24% Poliammide

# BLISS



2.2 Nm  
92% Cotone  
7% Poliammide  
1% Elastan

# MALIBÙ



5.7 Nm  
85% Cotone  
15% Poliammide

# BAHIA



3.4 Nm  
92% Cotone  
8% Poliammide



# MAREMMA



2.1 Nm  
76% Cotone  
24% Poliammide



# BORACAY GRS



18 Nm  
50% Poliammide Riciclato  
50% Cotone



## Choco Slappy Cup

INGREDIENTI: 4 cl di rum scuro; 2 cl di Comtreau;  
1 pallina di gelato al cioccolato; 2 cucchiaini di latte di cocco;  
1 cucchiaino di succo di arancia; cacao in polvere; 2g di cannella;  
scorza di arancia biologica non trattata.



# DAINO



2.5 Nm  
70% Poliestere  
30% Poliammide



PROVOCATORI POETICI  
PROVOCATIVE AND POETICAL



# PAPAGAYO



1.7 Nm  
52% Cotone  
34% Poliestere  
14% Poliammide

# BAMBI



3.4 Nm  
66% Poliestere  
34% Poliammide





# MARATEA



3,4 Nm  
65% Cotone  
35% Poliammide



# RAILAY



2,8 Nm  
63% Cotone  
30% Poliammide  
7% Lino



COSMOPOLITAN

INGREDIENTI:

4 cl di vodka; 1,5 cl di cointreau;  
1,5 cl succo di lime;  
3 cl succo di mirtille e mirtillo rosso.



FLASH



4.8 Nm

56% Fibra Metallizzata

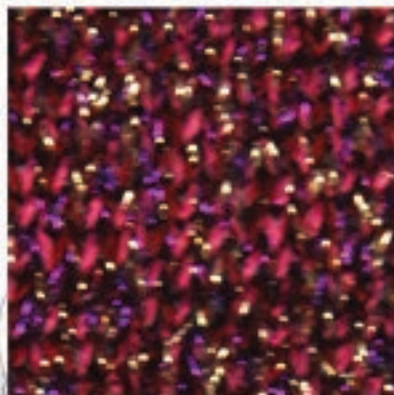
44% Poliammide



**STILE COSMOPOLITA**  
COSMOPOLITAN STYLE



# AGADIR



3 Nm

65% **Acetato\***

18% Fibra Metallizzata

17% Poliammide

# STRASS



11 Nm

74% **Acetato\*** - 18% Viscosa

8% Fibra Metallizzata

12.5 Nm

88% **Acetato\*** - 6% Poliammide

6% Fibra Metallizzata

23 Nm

80% **Acetato\*** - 10% Poliammide

10% Fibra Metallizzata

*Stock Service*

# MELBY



\* NATURAL ORIGIN  
ECO-SUSTAINABLE  
RECYCLABLE  
PROCESS GREEN

25 Nm  
85% **Acetato\***  
15% Poliammide



# STRASS 37



\* NATURAL ORIGIN  
ECO-SUSTAINABLE  
RECYCLABLE  
PROCESS GREEN



37 Nm  
65% **Acetato\***  
18% Fibra Metallizzata  
17% Poliammide





Manifattura IGEA S.p.A. - Via Pollative 119/L - 59100 PRATO - tel. 0574 5181 fax 0574 621749  
[www.igeayarn.it](http://www.igeayarn.it) - [igea@igeayarn.it](mailto:igea@igeayarn.it)

MEMBER OF



CONSORZIO  
PROMOZIONE  
FILATI

